

# RUTGERS

New Jersey Agricultural  
Experiment Station



## Hunterdon County 4-H Youth Development Program

New 4-H Volunteer Training





## Hunterdon County 4-H Staff

**Office hours:** 8:30am-4:30pm, Monday-Friday

**Website:** <https://hunterdon.njaes.rutgers.edu/4h/>

**Phone:** 908-788-1341

Email: [hunterdon4h@njaes.rutgers.edu](mailto:hunterdon4h@njaes.rutgers.edu)

### *Office Staff*

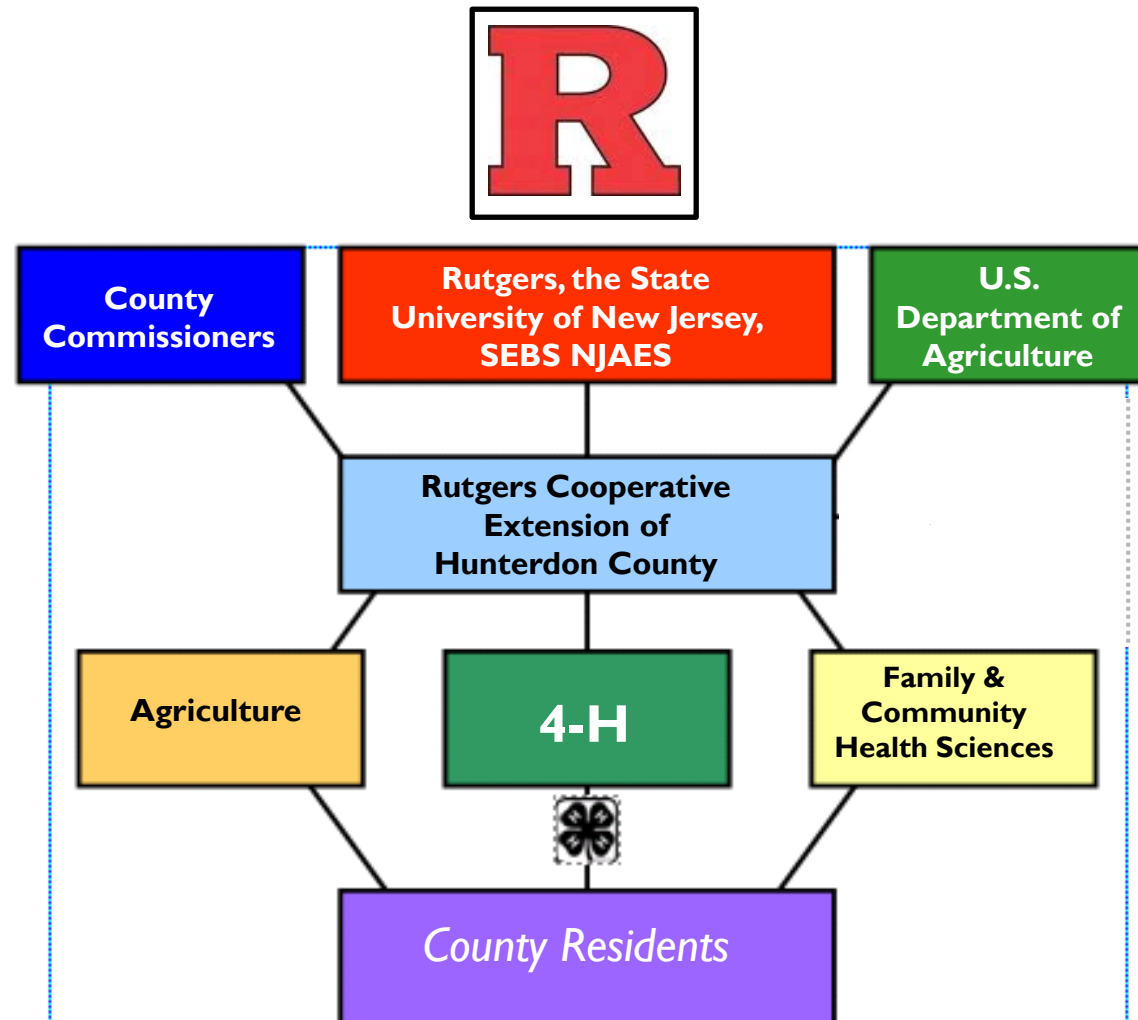
*Harry Brochinsky: Temporary Hunterdon County 4-H Program Coordinator*

*Kimberley Crommelin: Senior Account Clerk*

*Kevin Dunn: Administrative Clerk*



# Organizational Chart



# Responsibilities of a 4-H Leader

- Establish yearly club meeting and event schedule.
- Plan and coordinate club meetings:
  - Recommendations
    - Business portion: 15-20 minutes (minimum of 1/month)
    - Educational portion: 30-40 minutes
    - Recreational/Social portion: 10-15 minutes
- Monitor any club officers
  - Allow officers to handle what is appropriate for them



## Responsibilities of a 4-H Leader

- Guide youth to set and accomplish reasonable, age-appropriate goals.
- Collect required forms
- Keep informed of - and share - relevant 4-H news (county, state, national)
  - Hunterdon 4-H Flash, website, other correspondence
  - Let members know details and deadlines





## 4-H Name and Clover Policies

### *4-H Name and Emblem Use Policy*

- Use of the 4-H name and emblem (4-H Clover) is regulated by federal statute.
- The 4-H Clover cannot be altered in any way, including color, dimensions, orientation, etc.
- Any printing of the clover on collateral items such as t-shirts, banners, etc. must be done by an approved vendor. The 4-H Office has a list of vendors.
- Contact the 4-H Office before including the name or clover on any club items.

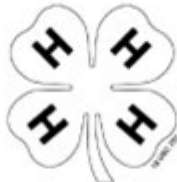
A 4-H National Headquarters Fact Sheet is available for guidance.



Preferred



Accepted



Accepted



Appropriate Use



Inappropriate Use

## Club Treasury and Fundraising

- Purpose is to obtain and provide funds to support the club goals.
- Apply for EIN to open club bank account.
- Submit record of income and expenses to 4-H office by November 1 of each year.
- Annual IRS filing -- see 4-H staff.
- Comply with all rules and regulations.





# Club Parents

- Find out how your parents can assist you
- Allow your parents to assist
- Let parents know that they are appreciated
- Let them know about all the opportunities 4-H offers their children
- 4-H is not a “kid sitting service” encourage them to stay at meetings







## Hunterdon County 4-H Leaders Association

- Comprised of all appointed volunteers in the county 4-H program.
- Meets at 7:30 PM on the 3<sup>rd</sup> Thursday in Jan, Mar, May, July, Sept and Nov
- Help plan, implement & evaluate county 4-H events & programs
- Provide support and encouragement to new clubs
- Provide new volunteers with information relating to upcoming events and opportunities.
- Identify needs of the 4-H program
- Mentor new volunteers
- Provide funding for the fair

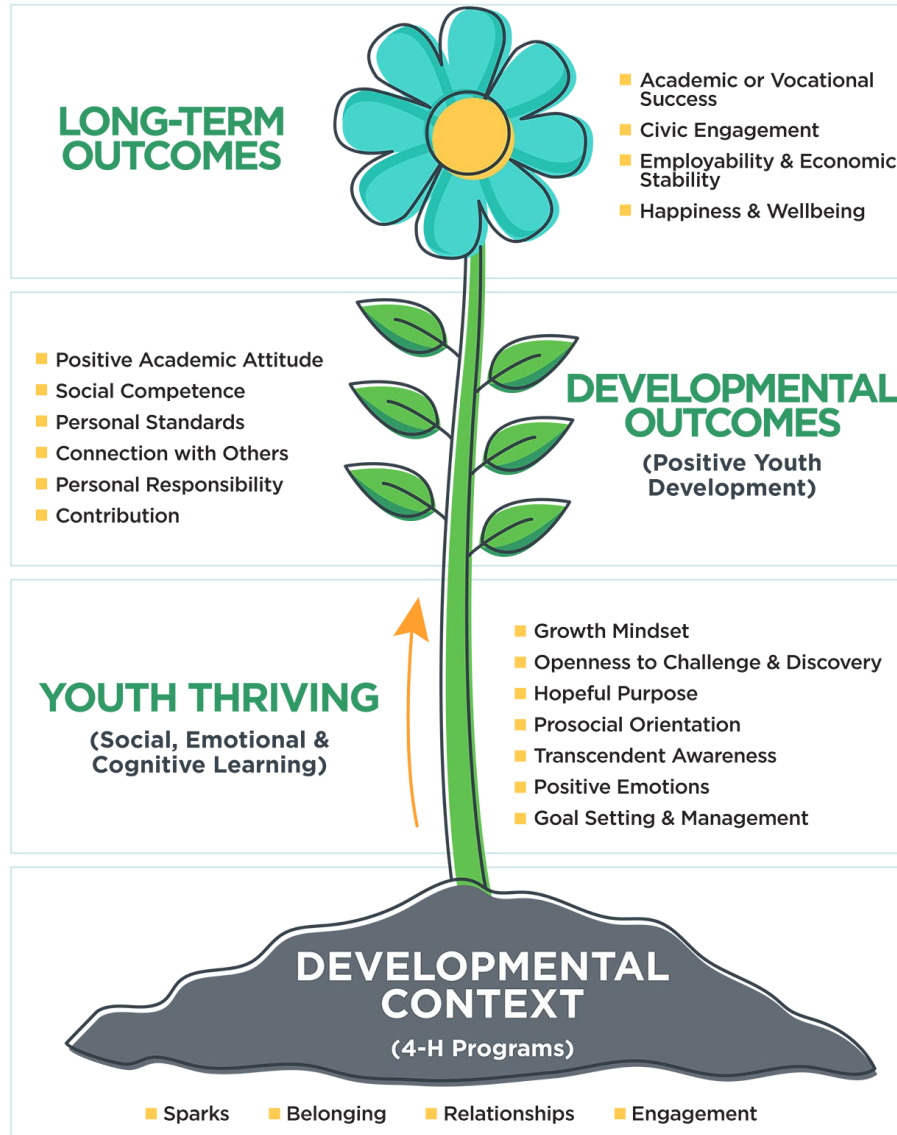


## What do you need to know as a club leader?

Research shows there are elements that are essential to the healthy growth and development of youth. 4-H volunteers should ensure that youth experience these elements through the 4-H program.

- **Belonging**
- **Independence**
- **Generosity**
- **Mastery**





## 4-H Thriving Model

We've learned that youth thriving is dependent on having high quality 4-H programs where youth feel like they belong and have relationships with supportive adults.

We also know that thriving youth achieve important developmental outcomes, like personal responsibility, academic motivation, confidence, and high personal standards.



## Kids Come First

- You all have the same goal - step back let the members do things
- Let the members make decisions, if you know something will not work explain to them why not
- Be flexible - different members need different things & different times call for different responses
- Treat the members how you wanted to be treated as a leader





# Start your club meeting with the Pledge of Allegiance and the 4-H Pledge





*I pledge:*



**Head**

to Clearer Thinking



**Heart**

to Greater Loyalty



**Hands**

to Larger Service



**Health**

to Better Living



*...for my Club, my Community, my Country and my World.*



# How do you find a place to meet?

- Here at the office, schools, homes, etc.
- Email the office if you
  - Need a room here
  - Need help finding a place
- Meeting Use Room Request Form
  - [Meeting Use Request Form](#)
  - Filled out and submitted before you reserve a room



# How do you recruit members?

- Flyers that we help design
- Website – forwarded by office
- Social Media
- 4-H Events
  - Fair
  - Community Events staffed by clubs







# Member Registration



- All youth complete a New Member Registration Form.
  - This is signed by the leader and returned to the office by the parent.
  - This is done for EVERY new club they join.
- All youth must register through 4H Online.
  - This MUST be completed annually.
  - **ALL** 4-H events require youth to be enrolled in 4-H online in order to participate. In order to participate in a state event, the member must be enrolled in the county program by January 1 of the event year.
- Event Permission forms for all activities other than regular club meetings.
- These can be found on the website: <https://hunterdon.njaes.rutgers.edu/4h/>



# Opportunities for Youth Beyond the Club Experience

## *County*

- NJTC
- Winter Camp
- County Presentations
- Fair



## *State*

- Breeders Symposium
- 4-H Camp
- State Presentations
- Events run by clubs from other counties

## *National*

- CWF, Conference, Conference, Ignite
- Even international opportunities





## Member in Good Standing Policy

### In Hunterdon County 4-H, members in good standing:

- Must keep an up-to date record book
- Attend a minimum of 70% of club meetings
- Present a club level presentation
- Participate in at least on community service project
- Participate in one fairground clean up
- Participate in one fundraising activity on a club County or State level

\*Additional standards may be required for state and national events.





# *Hunterdon County 4-H Website*





# HUNTERDON COUNTY 4-H AND AGRICULTURAL FAIR



**AUGUST 23 - 27, 2023**



# 4-H Competition

- Kids compete with themselves: to make their personal best better
- Danish system is used mostly in 4-H
  - Kids set goals and work to achieve those goals.
  - In striving to reach a goal, kids compete with their own accomplishments, not those of others.
- Competition can be very hard on some kids
- **Competition is not the main focus of 4-H**



## 4-H Alumni to Leader Transition

- Being a leader is different than being a teen leader:
  - More responsibility: after members discuss, you have final say
  - Not their friend anymore: can still be friendly but must be serious and safe too
  - Play to your strengths, ask for help with your weaknesses
  - Gaining respect from members is different and more challenging
  - You need to be more respectful to members



ALONE  
WE CAN  
DO SO LITTLE.  
TOGETHER  
WE CAN  
DO SO MUCH.  
-HELEN KELLER